



## Welcome to Flying Butler Hammersmith

A private development of just two luxury serviced apartments close to the northern bank of the River Thames in Hammersmith.

Each apartment is designed to the highest specification so guests can enjoy superior quality and spacious interiors throughout. The generous two-bedroom and three-bedroom layouts are ideal for families, sharers or those needing more space.

This peaceful residential area is within easy reach of the shops and restaurants of Hammersmith Broadway, with its excellent transport connections to the West End, City and Heathrow Airport.

***Flying Butler Apartments – the next best thing to home.***



## Accommodation choices

- Two-bedroom/two-bathroom apartment
  - 789sqft /73sqm
  - Garden access
- Three-bedroom/three-bathroom apartment
  - 1156sqft /107sqm
  - Split over two floors

## Make yourself at home

Each apartment offers comfortable accommodation you'll look forward to coming home to. We've included:

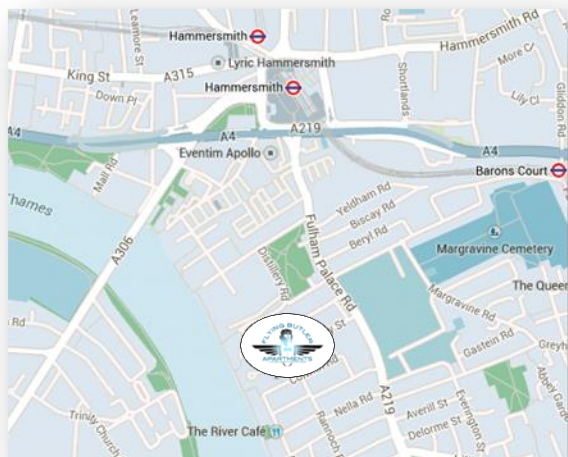
- Fully equipped kitchen with all you need including washer dryer, dishwasher, oven, hob and microwave
- Entertainment system with
  - Complimentary Wi-Fi throughout
  - 42inch flat screen television with Freeview
- Comfortable living area to relax in
- Dining table\* for entertaining or working from home
- Stylish bedrooms with ample storage
- Sleek shower rooms
- Vacuum cleaner, Iron/ironing board
- Quality linen and towels provided
- Interior design touches throughout

\*As applicable to size of apartment

## Taking care of you

- Weekly cleaning service
- 24/7 Customer Services
- Flying Butler services on request (chargeable)

## Location Map



## What we love about this neighbourhood

For foodies the award-winning River Café is just a short walk away along the river, whilst sports fans will not be disappointed as Fulham FC and Chelsea FC have their stadiums within easy reach. The London Wetland Centre across the river is a great place to visit and unwind on the weekend whilst the tow path along the River Thames also provides a perfect place to wander, jog or just relax.

## Walking distances (approx in minutes)

- Hammersmith station and shopping centre 8 minutes
- Tesco supermarket 8 minutes
- River Café 7 minutes

## The Flying Butler service

Our dedicated team are here to make your move to London as stress free as possible. Let us help you with:



### Airport Transfer

We'll take the stress out of your arrival by collecting you from any airport and whisking you to your apartment in a licensed taxi



### Meet & Greet

Receive a very warm welcome from the Flying Butler team who will help you settle in. For returning guests our self-service check-in gives the ultimate flexibility



### Hamper Service

Settle in with your favourite goodies or choose from our hamper selections, all pre-ordered and waiting in your apartment for your arrival



### Ironing Service

Let our team free up your precious time by taking care of your ironing chores whilst you're at work – doesn't that sound fantastic?



### Concierge Service

Weekend planning? The Flying Butler team have a wealth of local and knowledge to help offer personal tips to make the most of your spare time

Anything else you're not sure of? Just ask.

## About Flying Butler Apartments

Offering over 15 years experience in the serviced apartment market, our growing portfolio of accommodation currently includes apartments and townhouses in popular locations across London and Reading.

At the heart of the Flying Butler offering is our attention to customer service, regular housekeeping visits and dedicated 24/7 support team. We aim to provide you with the next best thing to home.

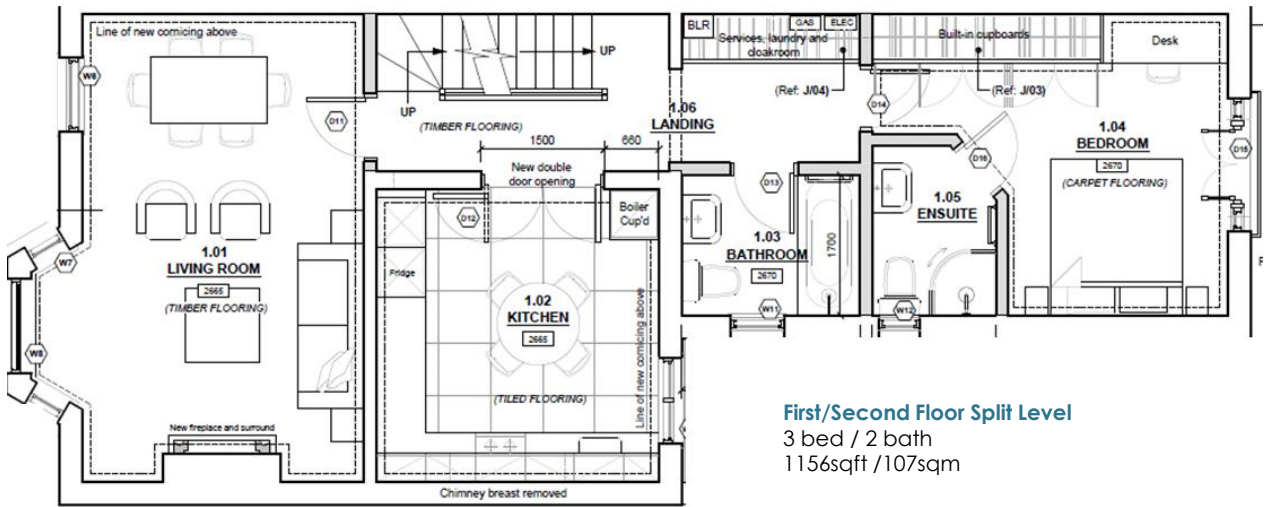
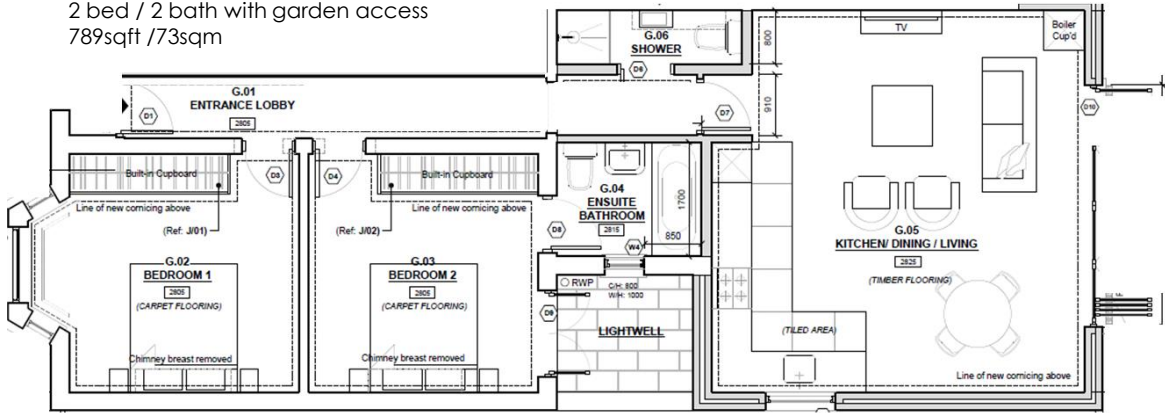
Current locations include:

Fitzrovia, Marylebone  
Westminster, Earls Court  
Barons Court, West Kensington  
Fulham Riverside, West Brompton  
Richmond, Kingston Riverside  
and Reading



## Ground Floor

2 bed / 2 bath with garden access  
789sqft / 73sqm



## First/Second Floor Split Level

3 bed / 2 bath  
1156sqft / 107sqm

