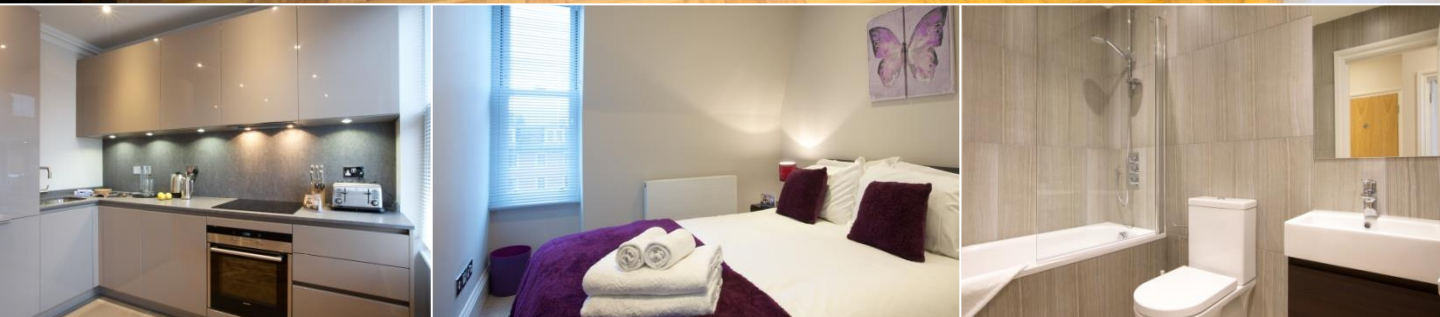


Earl's Court - Ongar Road



Photos show examples of typical layout and design. Apartments will vary.



Welcome to Flying Butler Earl's Court - Ongar Road

Our Flying Butler Earl's Court - Ongar Road Apartments offer newly refurbished two-bedroom apartments in a contemporary style within a traditional Victorian terrace.

The high quality finish throughout includes solid wood parquet flooring, sleek bathrooms and minimalist kitchens. As with all Flying Butler locations, complimentary Wi-Fi is available throughout.

Situated within walking distance to Earl's Court tube, the location gives you easy access to many restaurants, shops and local markets right on your doorstep – perfect for getting into your London lifestyle!

Flying Butler Apartments – the next best thing to home.



Accommodation choices

- Two-bedroom/one-bathroom apartment
 - 459sqft /43sqm
- Two-bedroom/two-bathroom apartments
 - 511-829sqft /47-77sqm
 - Larger lower ground apartment has private terrace

Make yourself at home

- Fully equipped kitchen with all you need including washer dryer, dishwasher, oven, hob and microwave
- Entertainment system with
 - Complimentary Wi-Fi throughout
 - 42inch flat screen television with Freeview
- Comfortable living area to relax in
- Dining table* for entertaining or working from home
- Stylish bedrooms with ample storage
- Sleek shower rooms
- Vacuum cleaner, Iron/ironing board
- Quality linen and towels provided
- Interior design touches throughout

*As applicable to size of apartment

Taking care of you

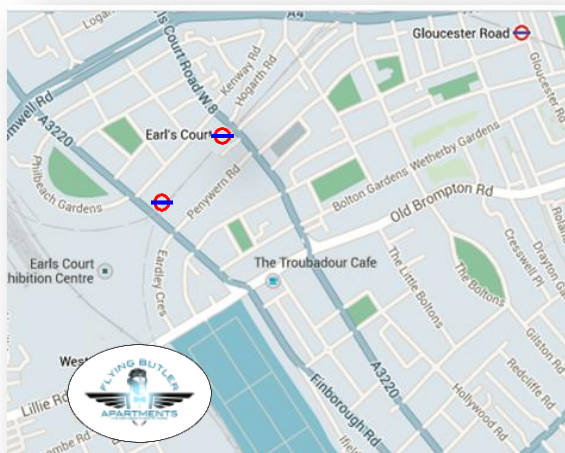
- Weekly cleaning service
- 24/7 Customer Services
- Flying Butler services on request (chargeable)

"Room Service" dining – delivered to your door



Enjoy hotel-quality room service deliveries via our partners at Room Seasons. Full hot or cold meals delivered right to your apartment!

Location Map



What we love about this neighbourhood

Within easy reach are the restaurants and bars of Earl's Court and Fulham, or head to the nearby boutiques of Fulham Road and King's Road and mix with celebrities at Bluebird or Boujji's. This popular area offers a real slice of London living and the perfect base for a business traveller seeking a work/life balance.

Walking distances (approx in minutes)

- Earl's Court 7 minutes
- Sainsbury's supermarket 5 minutes
- Old Brompton Road restaurants 10 minutes

The Flying Butler service

Our dedicated team are here to make your move to London as stress free as possible. Let us help you with:



Airport Transfer

We'll take the stress out of your arrival by collecting you from any airport and whisking you to your apartment in a licensed taxi



Meet & Greet

Receive a very warm welcome from the Flying Butler team who will help you settle in. For returning guests our self-service check-in gives the ultimate flexibility



Hamper Service

Settle in with your favourite goodies or choose from our hamper selections, all pre-ordered and waiting in your apartment for your arrival



Ironing Service

Let our team free up your precious time by taking care of your ironing chores whilst you're at work – doesn't that sound fantastic?



Concierge Service

Weekend planning? The Flying Butler team have a wealth of local and knowledge to help offer personal tips to make the most of your spare time

Anything else you're not sure of? Just ask.

About Flying Butler Apartments

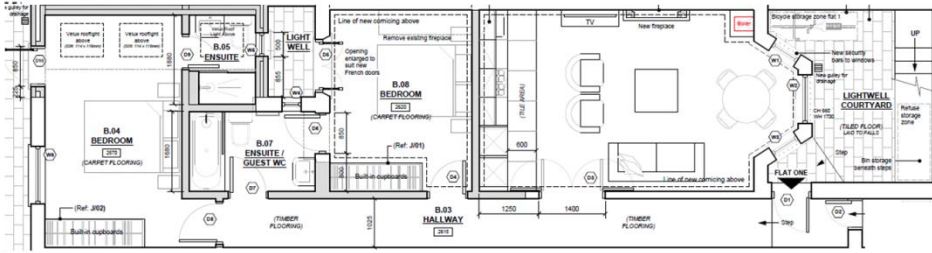
Offering over 15 years experience in the serviced apartment market, our growing portfolio of accommodation currently includes apartments and townhouses in popular locations across London and Reading.

At the heart of the Flying Butler offering is our attention to customer service, regular housekeeping visits and dedicated 24/7 support team. We aim to provide you with the next best thing to home.

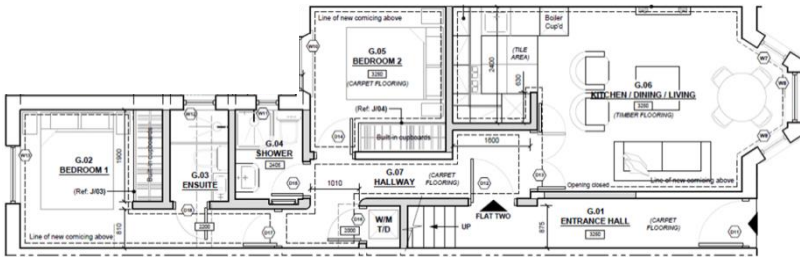
Over 100 apartments and townhouses across London and Reading. Find us in:

Barons Court, Chelsea, Earl's Court
Ealing, Fitzrovia, Hammersmith
Kingston, Marylebone, Richmond
Westminster and Central Reading

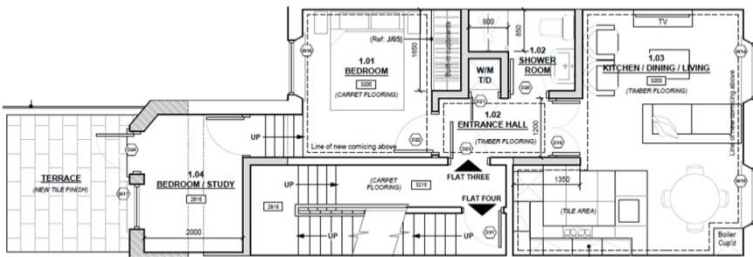




Lower Ground
2 bed / 2 bath with garden access
829sqft / 77sqm



Raised Ground
2 bed / 2 bath
596sqft / 55 sqm



First Floor
2 bed / 1 bath with terrace
459sqft / 43 sqm



Second Floor
2 bed / 2 bath
511sqft / 47sqm

