

Barons Court



Photos show examples of typical layout and design. Apartments will vary.



Welcome to Flying Butler Barons Court

Only one minute walk to Barons Court tube station, these newly refurbished apartments offer contemporary style in a traditional Victorian terrace.

The high quality finish throughout includes solid wood parquet flooring, sleek bathrooms and minimalist kitchens, whilst retaining many original features such as Victorian corning and fireplaces. As with all Flying Butler locations, complimentary Wi-Fi is available throughout.

The apartments offer an excellent base in this popular area of London. Tube connections at Barons Court for District and Piccadilly lines provide easy access to Heathrow and the West End. Guests are within walking distance to the historic Queens Club, best known for its famous annual grass court championships.

Flying Butler Apartments – the next best thing to home.



Accommodation choices

- Two-bedroom /two-bathroom apartments
- Sizes range from 481-701sqft / 45-65sqm
- Lower ground apartment offers external courtyard

Make yourself at home

Each apartment offers comfortable accommodation you'll look forward to coming home to. We've included:

- Fully equipped kitchen with all you need including washer dryer, dishwasher, oven, hob and microwave
- Entertainment system with
 - Complimentary Wi-Fi throughout
 - 42inch flat screen television with Freeview
- Comfortable living area to relax in
- Dining table* for entertaining or working from home
- Stylish bedrooms with ample storage
- Sleek shower rooms
- Vacuum cleaner, Iron/ironing board
- Quality linen and towels provided
- Interior design touches throughout

*As applicable to size of apartment

Taking care of you

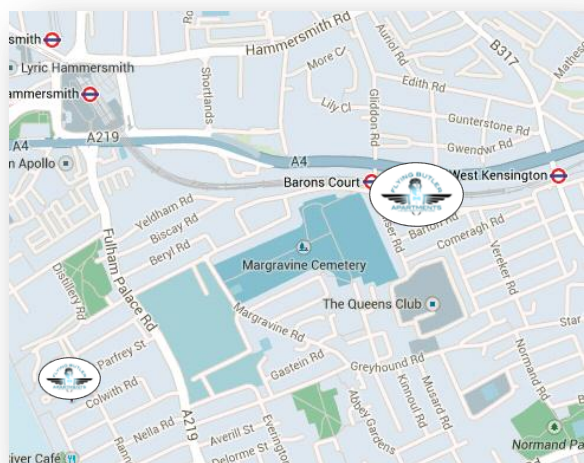
- Weekly cleaning service
- 24/7 Customer Services
- Flying Butler services on request (chargeable)

"Room Service" dining – delivered to your door



Enjoy hotel-quality room service deliveries via our partners at Room Seasons. Full hot or cold meals delivered right to your apartment!

Location Map



What we love about this neighbourhood

A tree-lined London suburb but still convenient for all the action that London offers. The shops of Notting Hill and Portobello Road markets are within easy reach as is the huge Westfield London shopping centre.

Tennis fans are within walking distance of the historic Queens Club. You'll be living like a truer Londoner here!

Walking distances (approx in minutes)

- Barons Court tube station 1 minute
- Queens Club 4 minutes
- Kensington High Street 20 minutes

The Flying Butler service

Our dedicated team are here to make your move to London as stress free as possible. Let us help you with:



Airport Transfer

We'll take the stress out of your arrival by collecting you from any airport and whisking you to your apartment in a licensed taxi



Meet & Greet

Receive a very warm welcome from the Flying Butler team who will help you settle in. For returning guests our self-service check-in gives the ultimate flexibility



Hamper Service

Settle in with your favourite goodies or choose from our hamper selections, all pre-ordered and waiting in your apartment for your arrival



Ironing Service

Let our team free up your precious time by taking care of your ironing chores whilst you're at work – doesn't that sound fantastic?



Concierge Service

Weekend planning? The Flying Butler team have a wealth of local and knowledge to help offer personal tips to make the most of your spare time

Anything else you're not sure of? Just ask.

About Flying Butler Apartments

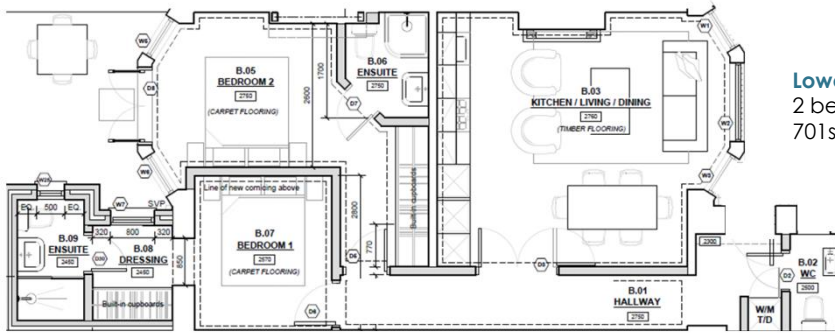
Offering over 15 years experience in the serviced apartment market, our growing portfolio of accommodation currently includes apartments and townhouses in popular locations across London and Reading.

At the heart of the Flying Butler offering is our attention to customer service, regular housekeeping visits and dedicated 24/7 support team. We aim to provide you with the next best thing to home.

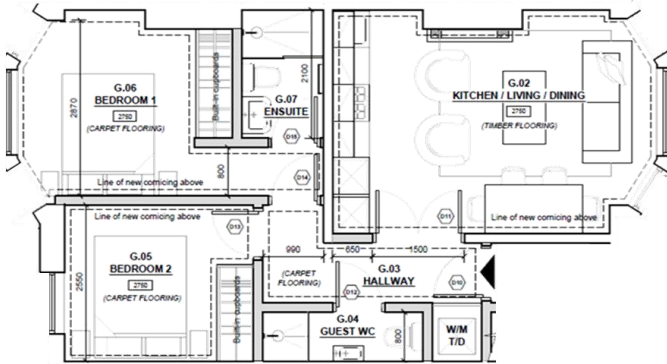
Current locations include:

- Fitzrovia, Marylebone
- Westminster, Earls Court
- Barons Court, West Kensington
- Fulham Riverside, West Brompton
- Richmond, Kingston Riverside
- and Reading

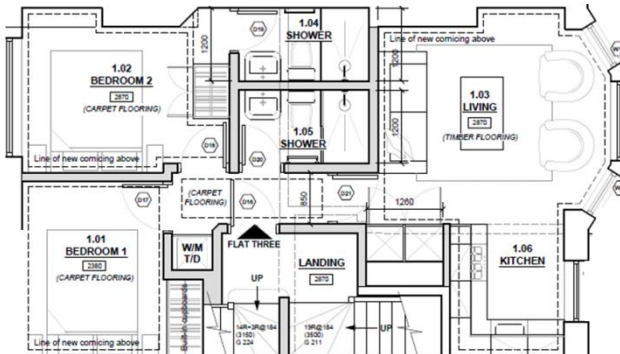




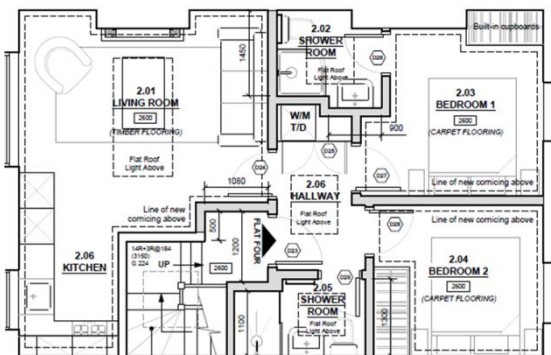
Lower Ground
2 bed / 2 bath with courtyard
701sqft / 65sqm



Raised Ground
2 bed / 2 bath
536sqft / 50sqm



First Floor
2 bed / 2 bath
481sqft / 47sqm



Second Floor
2 bed / 2 bath
491sqft / 46sqm

