

# Barons Court – Queen's Club



Photos show examples of typical layout and design. Apartments will vary.



## Welcome to Flying Butler Barons Court – Queens Club

Game-set-match! These newly refurbished apartments are an umpire's shouting distance from the famous Queens Club and offer contemporary living for both business and leisure stays.

These generous sized apartments are equipped with a high standard of facilities, including a stylish open plan kitchen with integrated appliances, complimentary Wi-Fi, well-proportioned bedrooms and sleek bathrooms.

Tennis fans look no further - most apartments offer unobstructed views of The Queens Club tennis courts.

Set among tree-lined streets and Victorian terraces, you will certainly know you're in London.

***Flying Butler Apartments – the next best thing to home.***



## Accommodation choices

- One-bedroom/one-bathroom apartment
  - Lower ground floor with private courtyard
  - 664sqft / 61sqm
- One-bedroom/one-bathroom apartment
  - Balcony overlooking The Queens Club
  - 498sqft / 46sqm
- Two-bedroom/one-bathroom apartments
  - Direct views overlooking The Queens Club
  - 485-552sqft / 45-51sqm

## Make yourself at home

Each apartment offers comfortable accommodation you'll look forward to coming home to. We've included:

- Fully equipped kitchen with all you need including washer dryer, dishwasher, oven, hob and microwave
- Entertainment system with
  - Complimentary Wi-Fi throughout
  - 42inch flat screen television with Freeview
- Comfortable living area to relax in
- Dining table\* for entertaining or working from home
- Stylish bedrooms with ample storage
- Sleek shower rooms
- Vacuum cleaner, Iron/ironing board
- Quality linen and towels provided
- Interior design touches throughout

\*As applicable to size of apartment

## Taking care of you

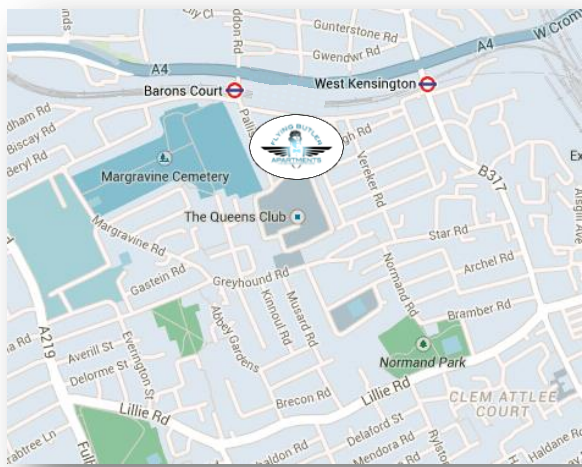
- Weekly cleaning service
- 24/7 Customer Services
- Flying Butler services on request (chargeable)

## “Room Service” dining – delivered to your door



Enjoy hotel-quality room service deliveries via our partners at Room Seasons. Full hot or cold meals delivered right to your apartment!

## Location Map



## What we love about this neighbourhood

A tree-lined suburb but still convenient for all the London action. The shops of Notting Hill and Portobello Road are within easy reach as is the huge Westfield London shopping centre.

Tennis fans are within walking distance of the historic Queen’s Club. You’ll be living like a true Londoner here!

## Walking distances (approx in minutes)

- Barons Court tube station 3 minutes
- Queen’s Club 2 minutes
- Kensington High Street 20 minutes

## The Flying Butler service

Our dedicated team are here to make your move to London as stress free as possible. Let us help you with:



### Airport Transfer

We’ll take the stress out of your arrival by collecting you from any airport and whisking you to your apartment in a licensed taxi



### Meet & Greet

Receive a very warm welcome from the Flying Butler team who will help you settle in. For returning guests our self-service check-in gives the ultimate flexibility



### Hamper Service

Settle in with your favourite goodies or choose from our hamper selections, all pre-ordered and waiting in your apartment for your arrival



### Ironing Service

Let our team free up your precious time by taking care of your ironing chores whilst you're at work – doesn't that sound fantastic?



### Concierge Service

Weekend planning? The Flying Butler team have a wealth of local and knowledge to help offer personal tips to make the most of your spare time

Anything else you're not sure of? Just ask.

## About Flying Butler Apartments

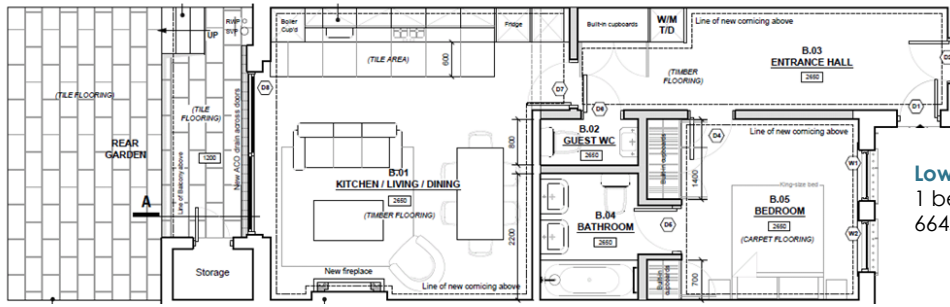
Offering over 15 years experience in the serviced apartment market, our growing portfolio of accommodation currently includes apartments and townhouses in popular locations across London and Reading.

At the heart of the Flying Butler offering is our attention to customer service, regular housekeeping visits and dedicated 24/7 support team. We aim to provide you with the next best thing to home.

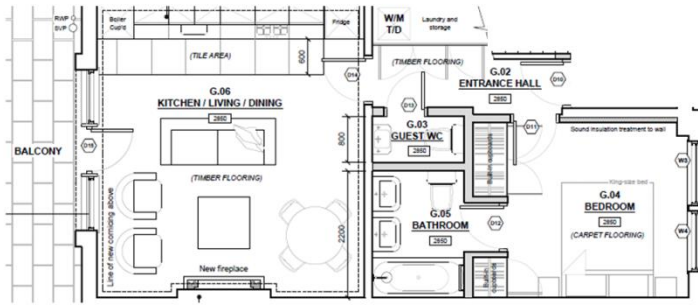
Over 100 apartments and townhouses across London and Reading. Find us in:

Barons Court, Chelsea, Earl’s Court  
Ealing, Fitzrovia, Hammersmith  
Kingston, Marylebone, Richmond  
Westminster and Central Reading

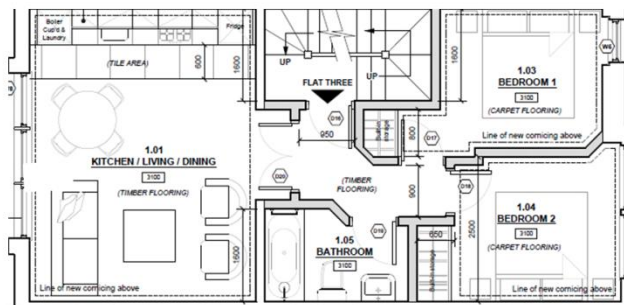




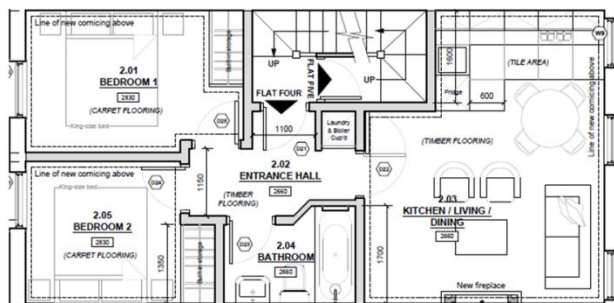
**Lower Ground**  
1 bed / 1 bath with courtyard  
664sqft / 62sqm



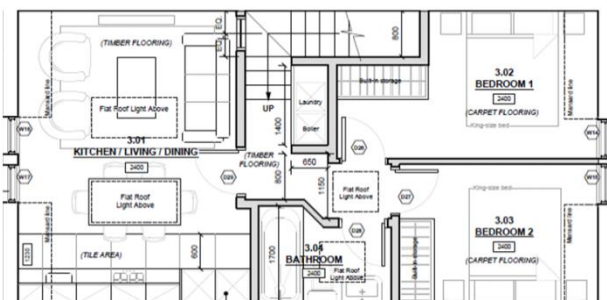
**Raised Ground**  
1 bed / 1 bath with balcony  
498sqft / 46sqm



**First Floor**  
2 bed / 1 bath  
495sqft / 46sqm



**Second Floor**  
2 bed / 1 bath  
485sqft / 45sqm



**Third Floor**  
2 bed / 1 bath  
552sqft / 51sqm

