

Photos show examples of typical layout and design. Apartments will vary.



Welcome to Flying Butler Westminster

Flying Butler Westminster Apartments are within an elegant and prestigious building in the heart of Central London. These spacious one-bedroom apartments have been lovingly designed with contemporary flair to accentuate light and space. Some apartments benefit from direct views over the tranquil St. Johns Gardens.

During your stay you'll be welcomed by the 24 hour concierge and benefit from free access to the gym, exercise pool and jacuzzi. Within easy reach are the shops and restaurants of Westminster and Victoria, as well historic locations such as the Houses of Parliament, St James's Park and the River Thames.

Flying Butler Apartments – the next best thing to home.



Accommodation choices

- One-bedroom/one-bathroom apartments
- Typical size approx 564sqft / 52sqm
- Onsite gym and swimming pool

Make yourself at home

Each apartment offers comfortable accommodation you'll look forward to coming home to. We've included:

- Fully equipped kitchen with all you need including washer dryer, dishwasher, oven, hob and microwave
- Entertainment system with
 - Complimentary Wi-Fi throughout
 - 42inch flat screen television with Freeview
- Comfortable living area to relax in
- Dining table* for entertaining or working from home
- Stylish bedrooms with ample storage
- Sleek en-suite bathrooms
- Vacuum cleaner, Iron/ironing board
- Quality linen and towels provided
- Interior design touches throughout

*As applicable to size of apartment

Taking care of you

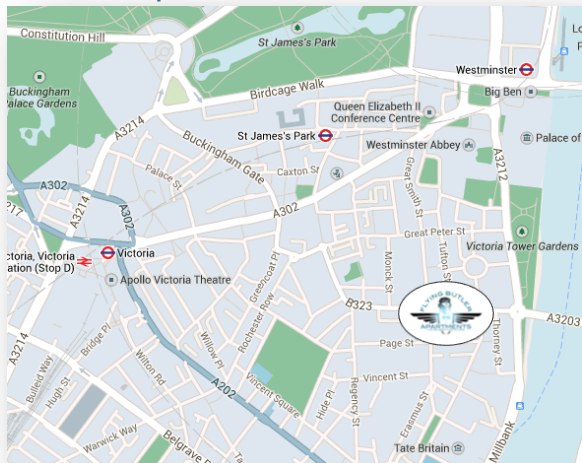
- Weekly cleaning service
- 24/7 Customer Services
- Flying Butler services on request (chargeable)
- 24/7 Concierge onsite
- Residents gym and swimming pool

"Room Service" dining – delivered to your door



Enjoy hotel-quality room service deliveries via our partners at Room Seasons. Full hot or cold meals delivered right to your apartment!

Location Map



What we love about this neighbourhood

Here you're surrounded by historical landmarks, excellent shopping and convenient access to the City and West End.

There are plenty of pubs, restaurants in the area for you to choose from and the pool and gym within the building offers a perfect way to de-stress after a tough day.

Walking distances (approx in minutes)

- Westminster and Victoria stations 8 minutes
- Houses of Parliament 7 minutes
- St James's Park 6 minutes
- River Thames 5 minutes

The Flying Butler service

Our dedicated team are here to make your move to London as stress free as possible. Let us help you with:



Airport Transfer

We'll take the stress out of your arrival by collecting you from any airport and whisking you to your apartment in a licensed taxi



Meet & Greet

Receive a very warm welcome from the Flying Butler team who will help you settle in. For returning guests our self-service check-in gives the ultimate flexibility



Hamper Service

Settle in with your favourite goodies or choose from our hamper selections, all pre-ordered and waiting in your apartment for your arrival



Ironing Service

Let our team free up your precious time by taking care of your ironing chores whilst you're at work – doesn't that sound fantastic?



Concierge Service

Weekend planning? The Flying Butler team have a wealth of local and knowledge to help offer personal tips to make the most of your spare time

Anything else you're not sure of? Just ask.

About Flying Butler Apartments

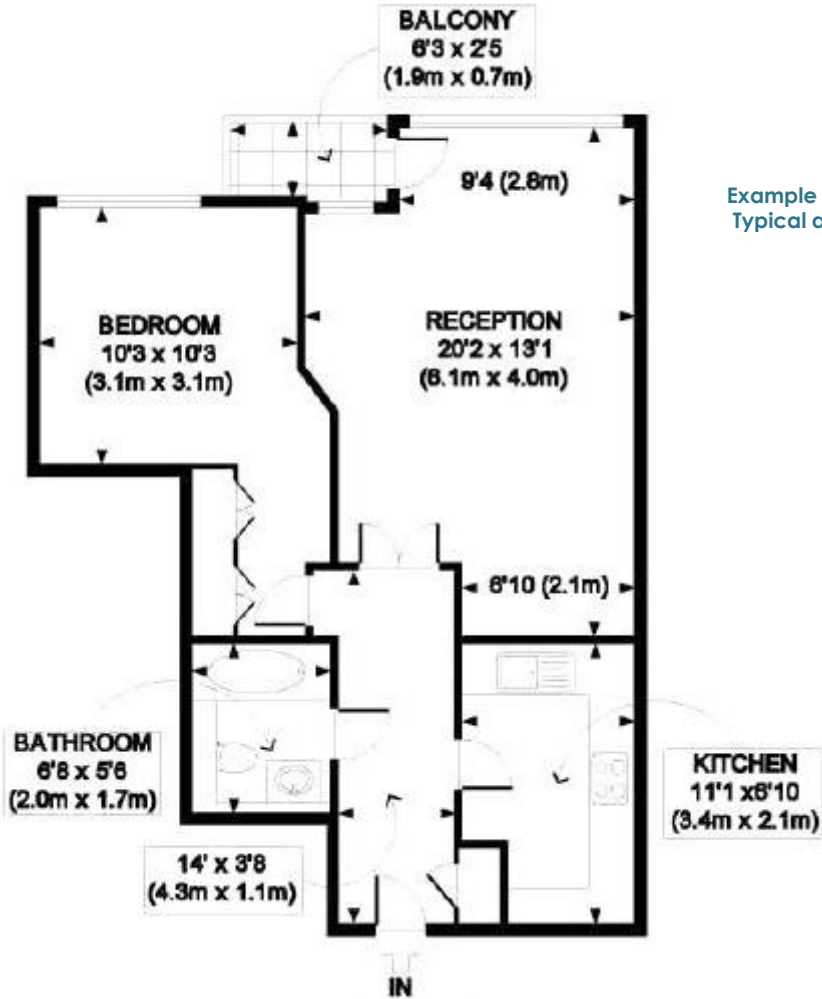
Offering over 15 years experience in the serviced apartment market, our growing portfolio of accommodation currently includes apartments and townhouses in popular locations across London and Reading.

At the heart of the Flying Butler offering is our attention to customer service, regular housekeeping visits and dedicated 24/7 support team. We aim to provide you with the next best thing to home.

Current locations include:

Fitzrovia, Marylebone
Westminster, Earls Court
Barons Court, West Kensington
Fulham Riverside, West Brompton
Richmond, Kingston Riverside
and Reading





Example One-bedroom apartment
Typical approx. size 564sqft / 52sqm

